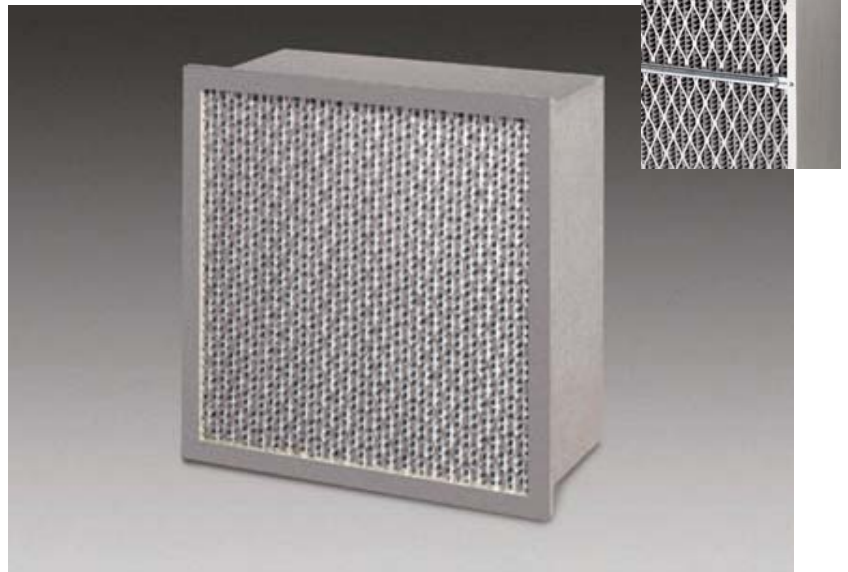


FILTRATION GROUP HT ASHRAE



- High temperature applications for up to 500°F and 750°F
- Silicone free construction
- Very rigid design, using 24 gauge frames and 16 gauge face-grill
- Aluminized metal parts for 750°F rated filter



DESCRIPTION

The Aerostar HT ASHRAE is an extended surface, high temperature filter, design with rigid construction. The filter utilizes a continuous sheet of wet-laid microfiber glass media that is deep pleated. Corrugated aluminum separators with hemmed edges are placed between each pleat to stabilize and support the media pack, ensuring proper laminar airflow through the filter. The filter pack is then placed in a galvanized (500°F) or aluminized (750°F) steel frame, a 16 gauge aluminized face-grill and a stiffened 18 gauge aluminized crossbar downstream. Air by-pass is eliminated by sealing the filter pack with dual layer glass-mats on top and bottom against the frame.

BENEFITS

The sturdy design and excellent media quality allows placing the filters in high temperature applications of 500° to 750° F.

A rigid aluminized 16 gauge expanded face-grill prevents shifting or blowout of the filter pack. This solid type of construction will also reduce possible damage to the filter during handling and shipping. The 750°F rated filter will have all metal parts aluminized to prevent the possibility of flaking at high temperatures. Because no silicone is used in assembling the filters, they are suitable for applications where a silicone release is not permitted.

APPLICATIONS

Applications include paint drying ovens (automobile industry, etc.), high temperature sterilization or wherever filtered high temperature air is needed.



FILTRATION GROUP HT ASHRAE

DIMENSIONS AND PERFORMANCE DATA

90-95% ASHRAE EFFICIENCY, 500°F (FACE-GRILL UPSTREAM & DOWNSTREAM)								
SINGLE HEADER PART #:	NOMINAL FILTER SIZE (HxWxD)	RATED AIR FLOW (cfm)			INITIAL RESISTANCE			MEDIA AREA (sq.ft.)
		250 fpm	375 fpm	500 fpm	250 fpm	375 fpm	500 fpm	
19579	24x12x12	500	750	1000	0.28	0.44	0.66	55
19578	24x24x12	1000	1500	2000	0.25	0.40	0.60	120

90-95% ASHRAE EFFICIENCY, 750°F (FACE-GRILL UPSTREAM & DOWNSTREAM)								
SINGLE HEADER PART #:	NOMINAL FILTER SIZE (HxWxD)	RATED AIR FLOW (cfm)			INITIAL RESISTANCE			MEDIA AREA (sq.ft.)
		250 fpm	375 fpm	500 fpm	250 fpm	375 fpm	500 fpm	
19583	24x12x12	500	750	1000	0.33	0.50	0.77	73
19582	24x24x12	1000	1500	2000	0.30	0.46	0.70	161

*Please contact customer service regarding other dimensions, frame materials and options.

SPECIFICATIONS:

- Media: Wet laid microfiber glass paper
*500°F designs are available with a media area of 161sq. ft. (24x24x12) & 73 sq. ft.(24x12x12) - Optional
- Frames: 24 gauge Galvanized Steel (500°F)
24 gauge Aluminized Steel (750°F)
*Stainless Steel – Optional
*Aluminized Steel for 500°F - Optional
- Face-grill: 16 gauge Aluminized Expanded Steel
- Actual Frame Sizes: Height and Width are 5/8" under nominal
Depth is 11.5" for 12" nominal
- Sealant mat: Fiberglass
- Gasketing: Braided Fiberglass Rope 3/8" Diameter, riveted to header
- Recommended Final Resistance: 1.2" w.g.
- Flammability: U.L. 900 Class 2
- Shipping: Palletized is recommended

DISTRIBUTED BY

© FGI 6/03



FILTRATION GROUP

FILTRATION GROUP
Phone: 877-FGI-TEAM (344-8326)
Fax: 800-518-1162
www.filtrationgroup.com