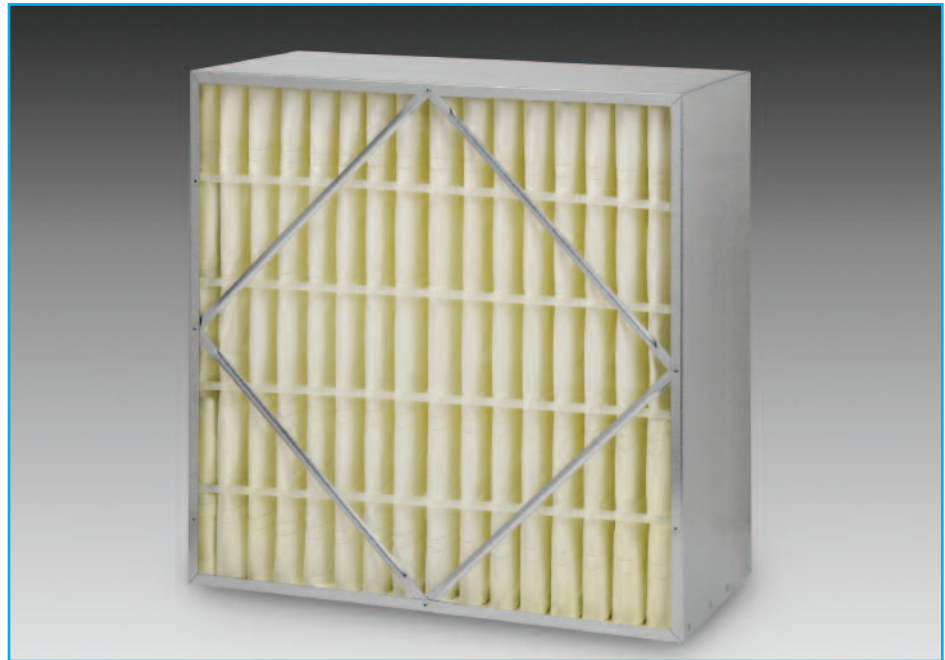


DAFCO FILTRATION GROUP®

SYNTHETIC RIGID CELL



- Lofted ultra fine synthetic media eliminates fiber shedding
- Superior media integrity in high humidity applications
- Rigid format prevents unloading in variable air volume systems
- Used in both side access & built-up filter banks
- Replaces traditional pocket-style filters
- Galvanized steel frame provides rigid construction
- Available in box-style or single header
- UL900 Class 2 (optional Class 1)



DESCRIPTION

The Synthetic Rigid Cell is an extended surface, medium to high efficiency filter. Dafco Filtration Group is taking advantage of recent technology improvements in synthetic media to offer a synthetic version of our rigid cell filter. Superior performance in high humidity applications combined with the elimination of media fiber shedding make this filter a smart choice over traditional fiberglass high efficiency products. The lofted ultra fine synthetic media provides excellent dust holding capacity and coupled with its rigid construction virtually eliminates dust particle unloading downstream of the filter.

A galvanized steel frame, diagonal support bracing, moisture proof media, contour stabilizers and metal media support grid enhance the durability of this filter. This durability eliminates media oscillation and media pull-away. The media of this filter is adhesively bonded to all four sides of the frame to eliminate air by-pass. The Synthetic Rigid Cell is available in a MERV 9, MERV 11, MERV 13 and MERV 14 per ASHRAE standard 52.2-2007.

BENEFITS

This filter is the ideal solution to IAQ problems that demand a high efficiency, long lasting rigid filter without costly modification to existing equipment. The secure, superior performance of this filter helps reduce costly maintenance.

The Rigid Cell can withstand many unfavorable conditions, especially variable air volume (VAV) without negatively affecting the performance of the filter.

APPLICATIONS

The Synthetic Rigid Cell can be used in place of many high efficiency style filters. This filter may be used in spaces requiring 6" or 12" filters and is suitable for use in most commercial and industrial HVAC systems. This filter can upgrade your current systems by providing exceptional filter integrity and consistent performance.

The Synthetic Rigid Cell can be used as a pre-filter for higher efficiency products or a final filter in HVAC systems that require a high level of efficiency and cleanliness. It is designed for ease of installation in either side access systems or built-up banks. It is available in traditional box style or single header versions.



DAFCO FILTRATION GROUP®

DIMENSIONS AND PERFORMANCE DATA

90-95% EFFICIENCY (MERV 14*)											
BOX STYLE PART NO.**	SINGLE HEADER PART NO.**	NOMINAL FILTER SIZE	ACTUAL FILTER SIZE	RATED AIR FLOW CAPACITY (cfm)			INITIAL RESISTANCE ("w.g.)†			MEDIA AREA (sq. ft.)	
				250 fpm	375 fpm	500 fpm	250 fpm	375 fpm	500 fpm	BOX	SINGLE
14914	16428	24 x 12 x 6	23 3/8 x 11 3/8 x 5 1/2	500	750	N/R	0.23	0.35	N/A	21	17
14915	16429	20 x 20 x 6	19 3/8 x 19 3/8 x 5 1/2	700	1050	N/R	0.23	0.35	N/A	28	24
14916	16430	24 x 20 x 6	23 3/8 x 19 3/8 x 5 1/2	850	1275	N/R	0.23	0.35	N/A	33	29
14917	16431	24 x 24 x 6	23 3/8 x 23 3/8 x 5 1/2	1000	1500	N/R	0.23	0.35	N/A	41	36
14918	16432	24 x 12V12	23 3/8 x 11 3/8 x 11 1/2	500	750	1000	0.23	0.35	0.47	30	25
14919	16433	20 x 20 x 12	19 3/8 x 19 3/8 x 11 1/2	700	1050	1400	0.23	0.35	0.47	41	35
14920	16434	24 x 20 x 12	23 3/8 x 19 3/8 x 11 1/2	850	1275	1700	0.23	0.35	0.47	49	42
14921	16435	24 x 24 x 12	23 3/8 x 23 3/8 x 11 1/2	1000	1500	2000	0.23	0.35	0.47	60	53
80-85% EFFICIENCY (MERV 13*)											
BOX STYLE PART NO.**	SINGLE HEADER PART NO.**	NOMINAL FILTER SIZE	ACTUAL FILTER SIZE	RATED AIR FLOW CAPACITY (cfm)			INITIAL RESISTANCE ("w.g.)†			MEDIA AREA (sq. ft.)	
				250 fpm	375 fpm	500 fpm	250 fpm	375 fpm	500 fpm	BOX	SINGLE
14922	16436	24 x 12 x 6	23 3/8 x 11 3/8 x 5 1/2	500	750	N/R	0.16	0.23	N/A	21	17
14923	16437	20 x 20 x 6	19 3/8 x 19 3/8 x 5 1/2	700	1050	N/R	0.16	0.23	N/A	28	24
14924	16438	24 x 20 x 6	23 3/8 x 19 3/8 x 5 1/2	850	1275	N/R	0.16	0.23	N/A	33	29
14925	16439	24 x 24 x 6	23 3/8 x 23 3/8 x 5 1/2	1000	1500	N/R	0.16	0.23	N/A	41	36
14926	16440	24 x 12 x 12	23 3/8 x 11 3/8 x 11 1/2	500	750	1000	0.16	0.23	0.31	30	25
14927	16441	20 x 20 x 12	19 3/8 x 19 3/8 x 11 1/2	700	1050	1400	0.16	0.23	0.31	41	35
14928	16442	24 x 20 x 12	23 3/8 x 19 3/8 x 11 1/2	850	1275	1700	0.16	0.23	0.31	49	42
14929	16443	24 x 24V12	23 3/8 x 23 3/8 x 11 1/2	1000	1500	2000	0.16	0.23	0.31	60	53
60-65% EFFICIENCY (MERV 11*)											
BOX STYLE PART NO.**	SINGLE HEADER PART NO.**	NOMINAL FILTER SIZE	ACTUAL FILTER SIZE	RATED AIR FLOW CAPACITY (cfm)			INITIAL RESISTANCE ("w.g.)†			MEDIA AREA (sq. ft.)	
				250 fpm	375 fpm	500 fpm	250 fpm	375 fpm	500 fpm	BOX	SINGLE
14930	16444	24 x 12 x 6	23 3/8 x 11 3/8 x 5 1/2	500	750	N/R	0.07	0.12	N/A	21	17
14931	16445	20 x 20 x 6	19 3/8 x 19 3/8 x 5 1/2	700	1050	N/R	0.07	0.12	N/A	28	24
14932	16446	24 x 20 x 6	23 3/8 x 19 3/8 x 5 1/2	850	1275	N/R	0.07	0.12	N/A	33	29
14933	16447	24 x 24 x 6	23 3/8 x 23 3/8 x 5 1/2	1000	1500	N/R	0.07	0.12	N/A	41	36
14934	16448	24 x 12 x 12	23 3/8 x 11 3/8 x 11 1/2	500	750	1000	0.07	0.12	0.20	30	25
14935	16449	20 x 20 x 12	19 3/8 x 19 3/8 x 11 1/2	700	1050	1400	0.07	0.12	0.20	41	35
14936	16450	24 x 20 x 12	23 3/8 x 19 3/8 x 11 1/2	850	1275	1700	0.07	0.12	0.20	49	42
14937	16451	24 x 24 x 12	23 3/8 x 23 3/8 x 11 1/2	1000	1500	2000	0.07	0.12	0.20	60	53
40-45% EFFICIENCY (MERV 9*)											
BOX STYLE PART NO.**	SINGLE HEADER PART NO.**	NOMINAL FILTER SIZE	ACTUAL FILTER SIZE	RATED AIR FLOW CAPACITY (cfm)			INITIAL RESISTANCE ("w.g.)†			MEDIA AREA (sq. ft.)	
				250 fpm	375 fpm	500 fpm	250 fpm	375 fpm	500 fpm	BOX	SINGLE
14938	16452	24 x 12 x 6	23 3/8 x 11 3/8 x 5 1/2	500	750	N/R	0.07	0.11	N/A	21	17
14939	16453	20 x 20 x 6	19 3/8 x 19 3/8 x 5 1/2	700	1050	N/R	0.07	0.11	N/A	28	24
14940	16454	24 x 20 x 6	23 3/8 x 19 3/8 x 5 1/2	850	1275	N/R	0.07	0.11	N/A	33	29
14941	16455	24 x 24 x 6	23 3/8 x 23 3/8 x 5 1/2	1000	1500	N/R	0.07	0.11	N/A	41	36
14942	16456	24 x 12 x 12	23 3/8 x 11 3/8 x 11 1/2	500	750	1000	0.07	0.11	0.14	30	25
14943	16457	20 x 20 x 12	19 3/8 x 19 3/8 x 11 1/2	700	1050	1400	0.07	0.11	0.14	41	35
14944	16458	24 x 20 x 12	23 3/8 x 19 3/8 x 11 1/2	850	1275	1700	0.07	0.11	0.14	49	42
14945	16459	24 x 24 x 12	23 3/8 x 23 3/8 x 11 1/2	1000	1500	2000	0.07	0.11	0.14	60	53

* Reference ASHRAE 52.2-2007

** Consult factory for additional sizes and performance data.

† Initial Resistance is based on Box style filters. Please add 0.03 to resistance to approximate the Single Header style filter.

SPECIFICATIONS

Filter Media:	Lofted synthetic
Frame:	26 ga galvanized steel
Flammability:	UL900 Class 2 (optional Class 1)
Recommended Final Resistance:	1.5" w.g.
Maximum Temperature:	180° F
Actual Header Depth:	13/16"

© DFG 01/08


DAFCO FILTRATION GROUP®

Phone: 1-888-628-3458
 www.dafcofiltrationgroup.com
 e-mail: info@dafcofiltrationgroup.com

